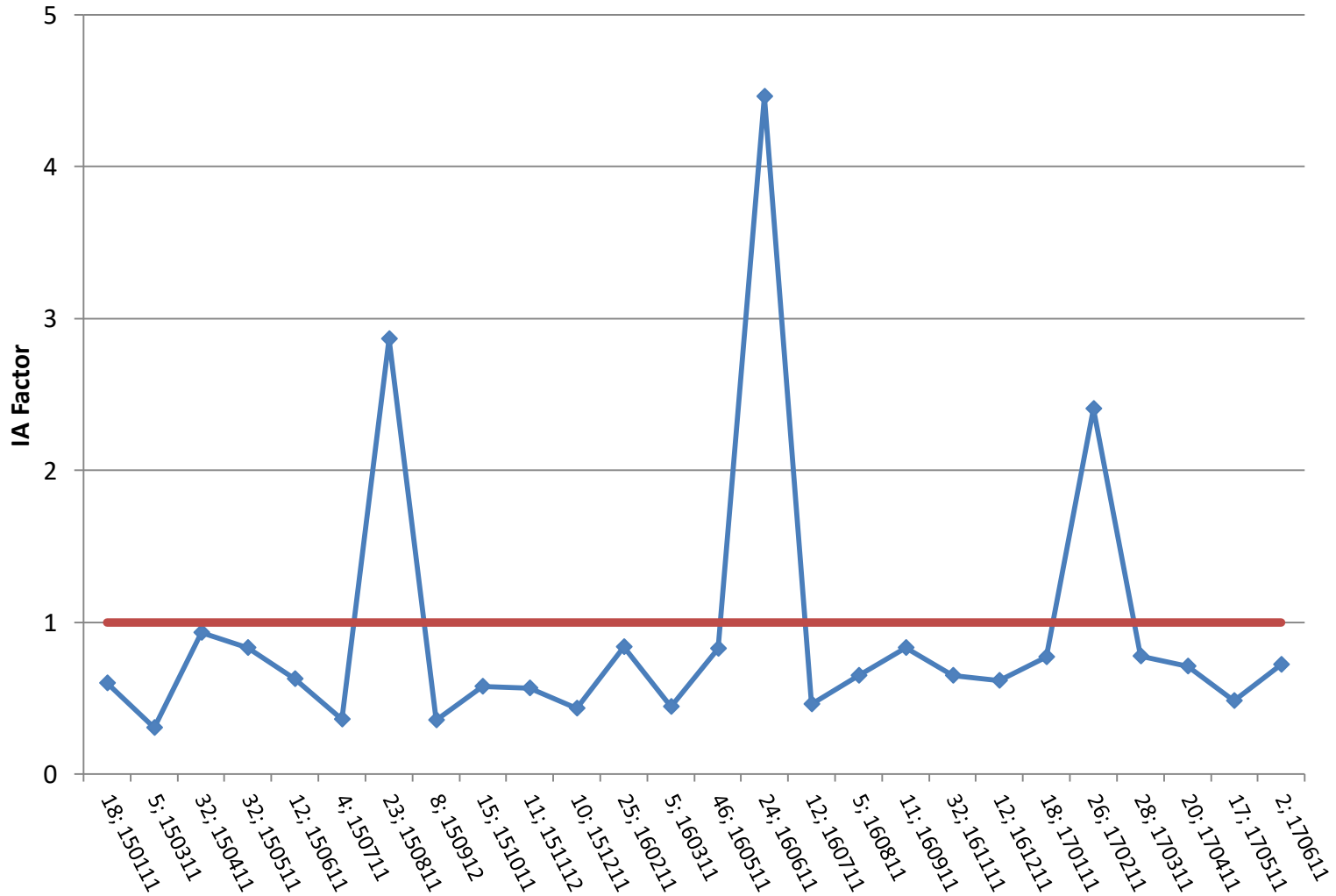


Nitrogen

Method 010.60, combustion

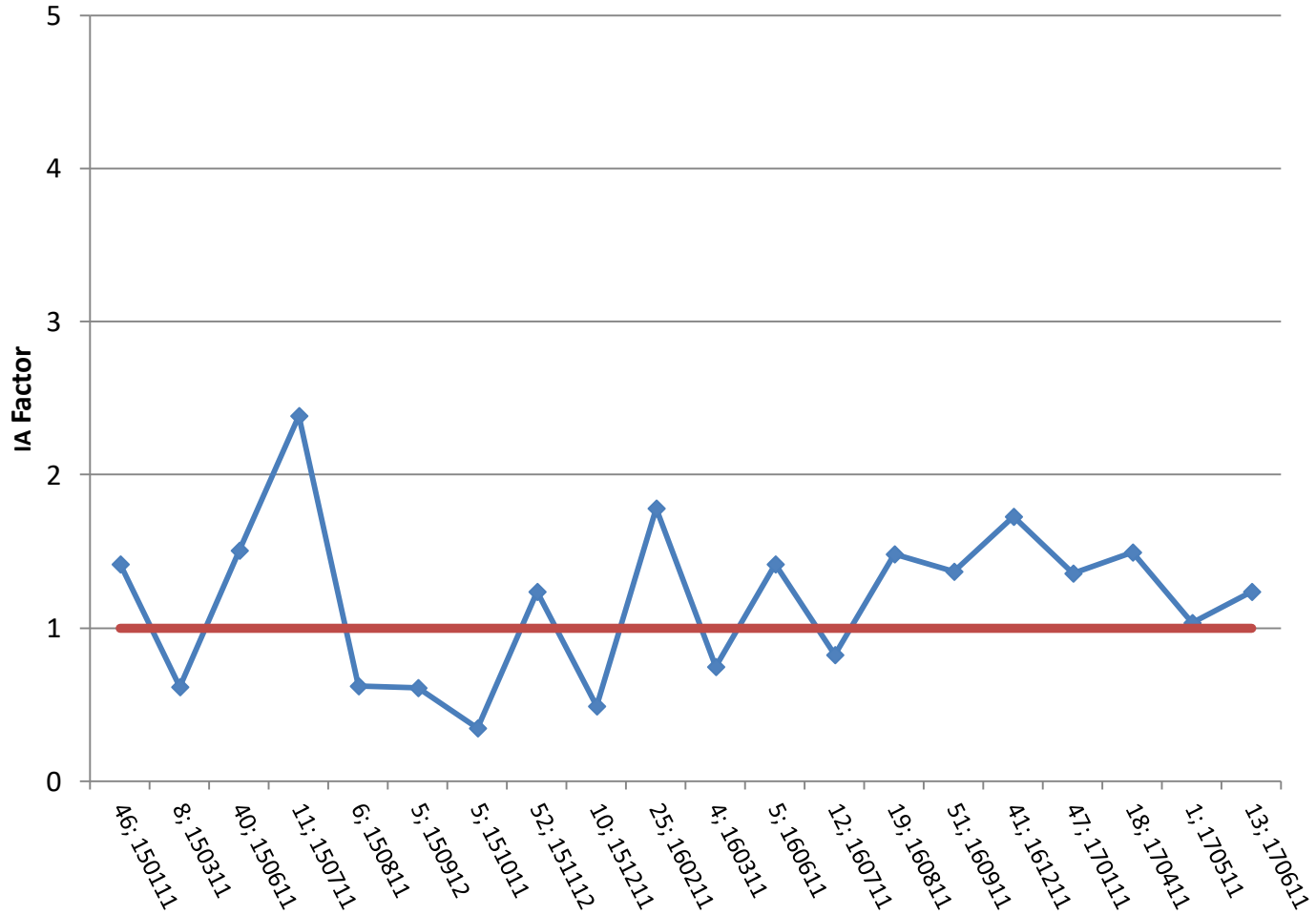
n = 45 to 60



Phosphorus

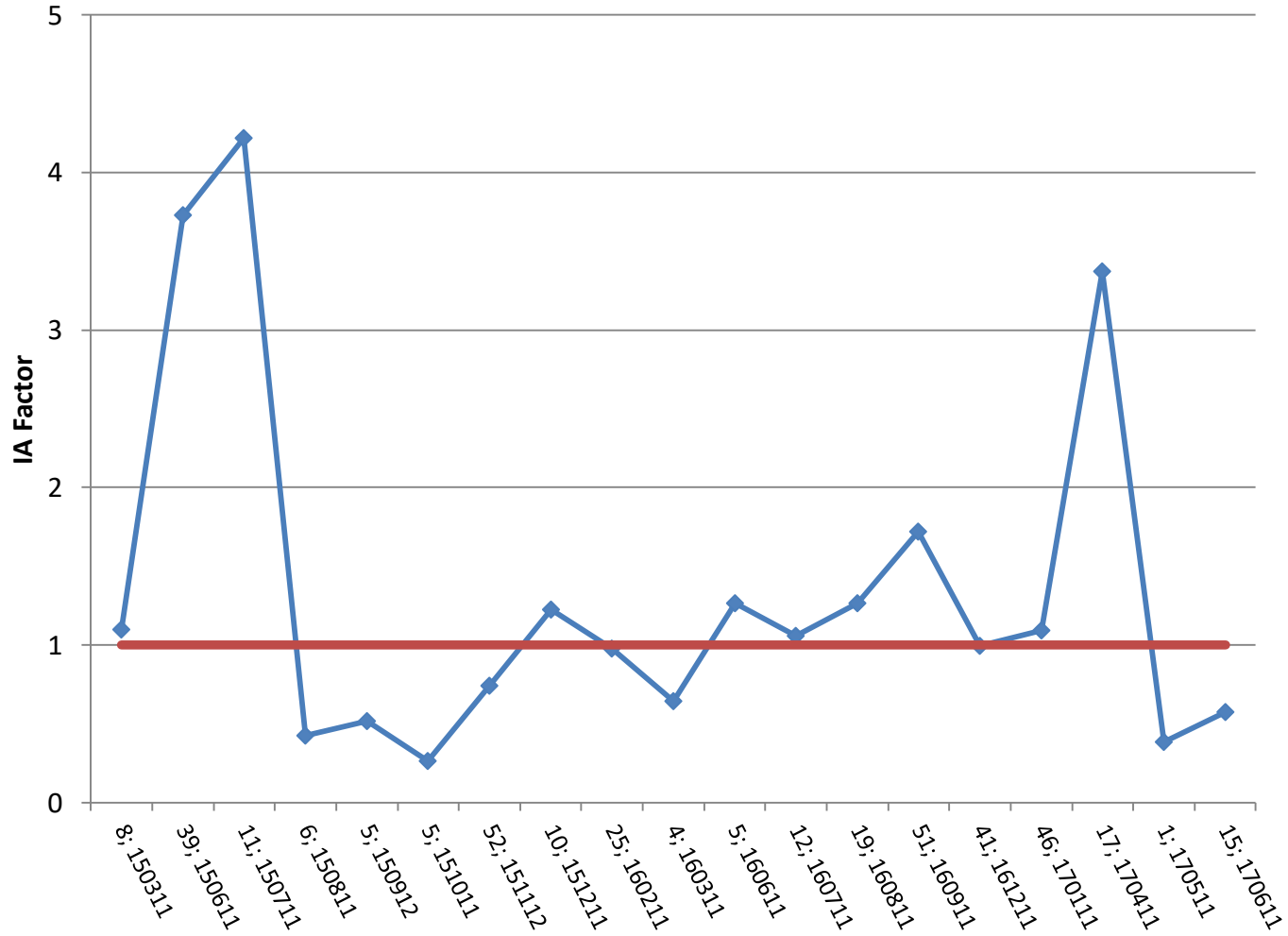
Method 041.60, Direct Available P₂O₅, citrate-soluble

n = 8 to 14



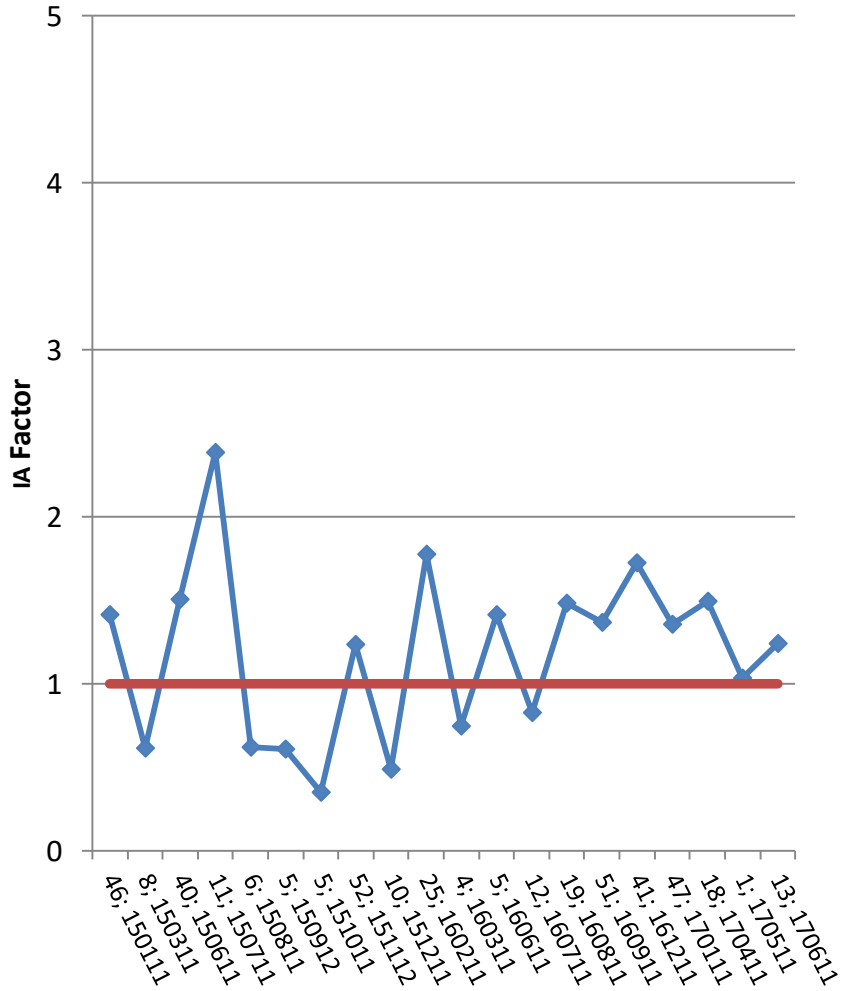
Phosphorus

Method 041.51, Direct Available P₂O₅, ICP citrate-soluble
n = 3 to 9

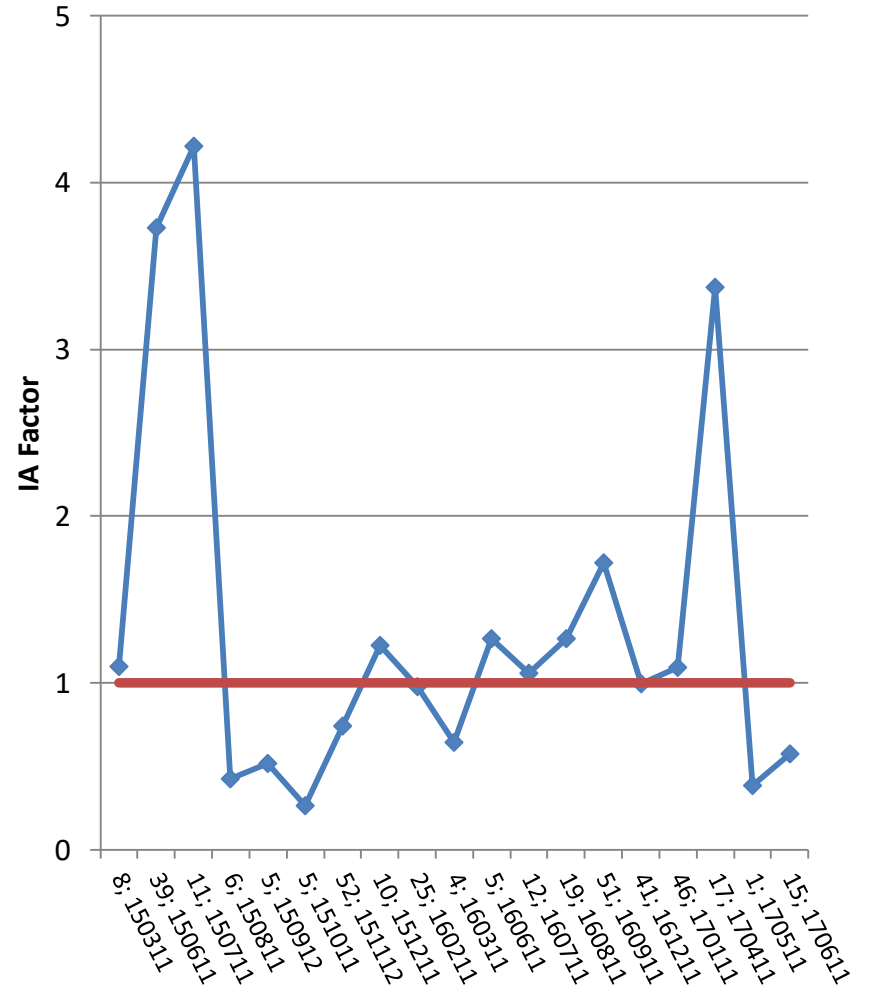


Phosphorus

Direct Available P2O5, citrate-soluble



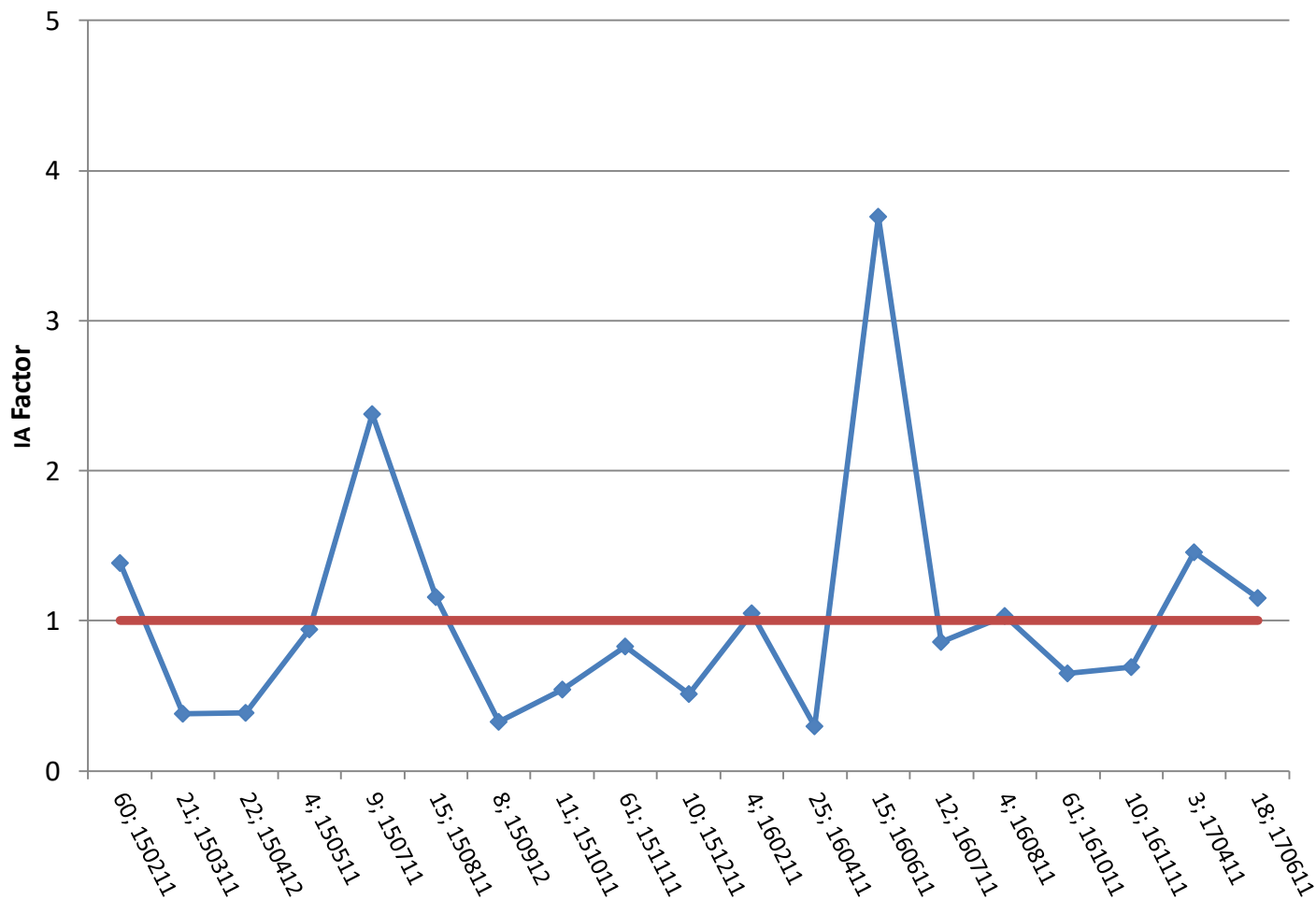
Direct Available P2O5, ICP citrate-soluble



Potassium

Method 050.00, Soluble K₂O, STPB Oxalate

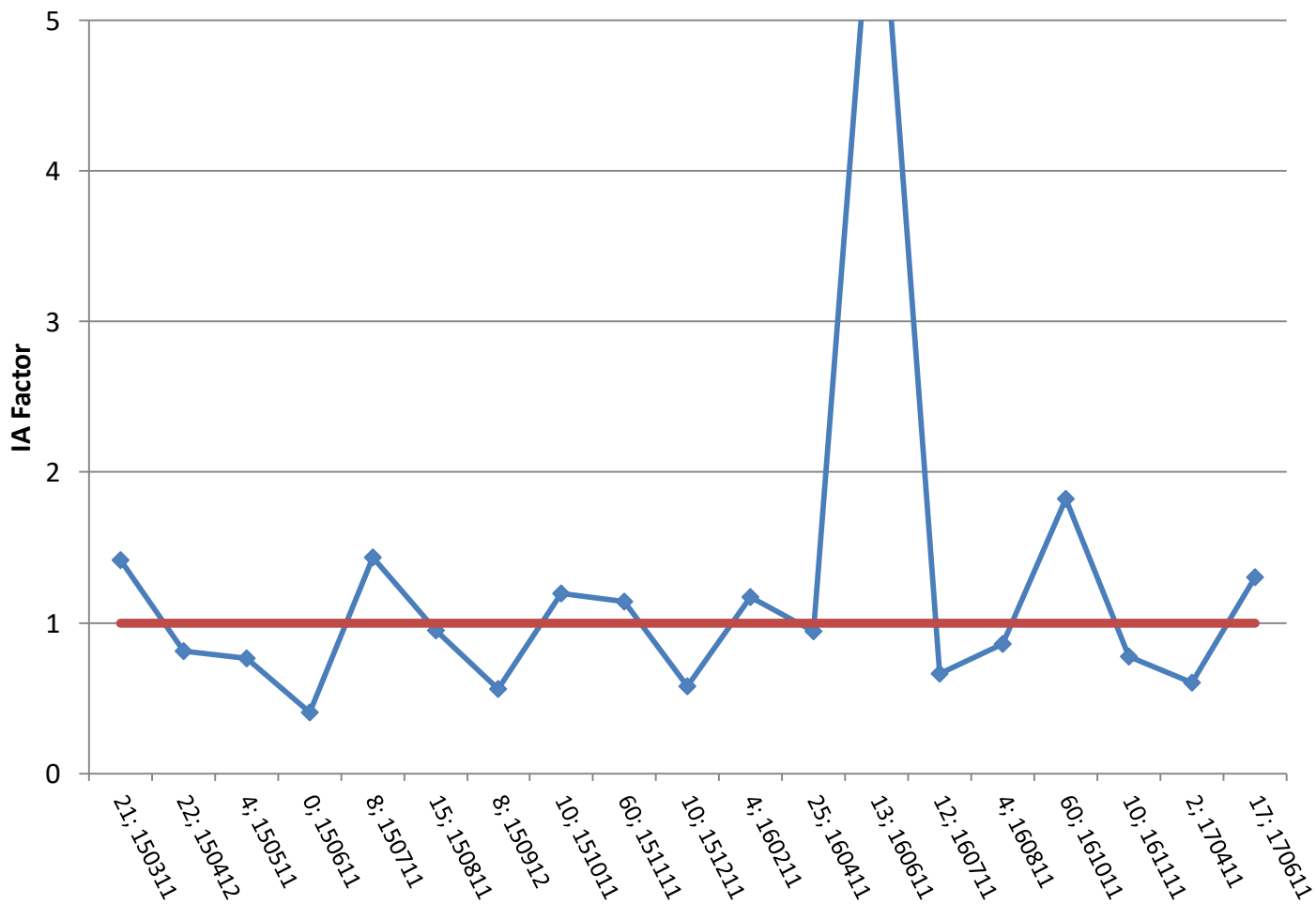
n = 7 to 14



Potassium

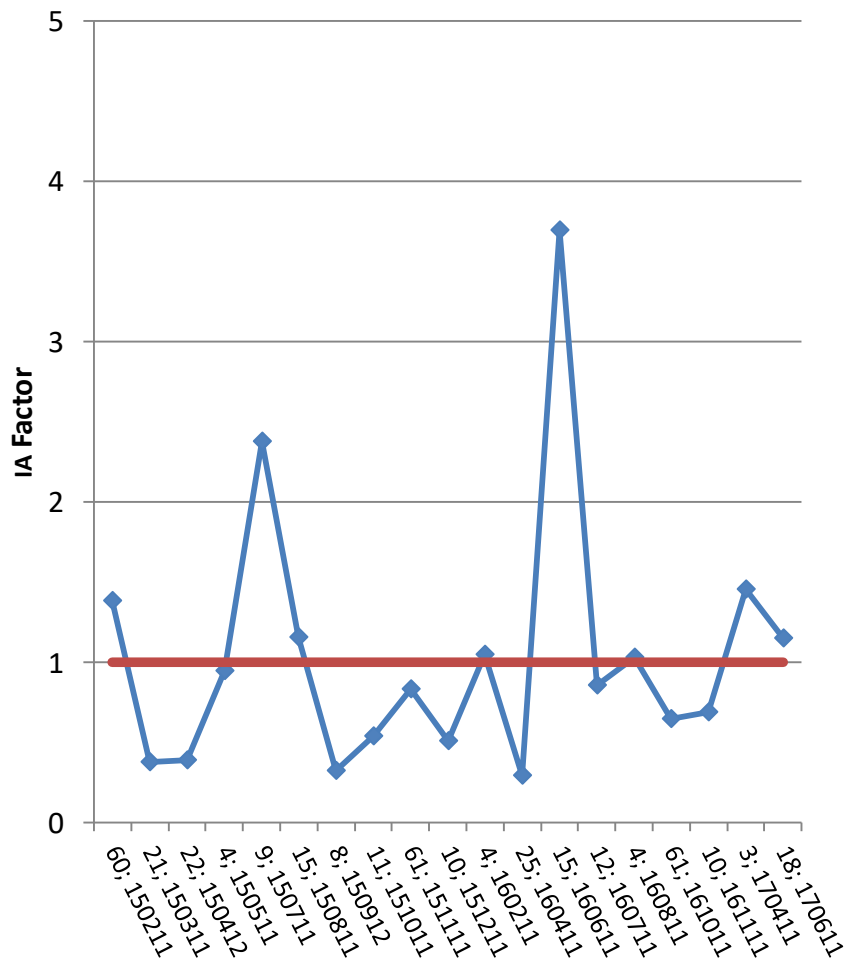
Method 050.52, Soluble K₂O, ICP citrate-EDTA

n = 4 to 11



Potassium

Soluble K₂O, STPB oxalate



Soluble K₂O, ICP citrate-soluble

