

# **Magruder Administrative Update**

*F.J. Sikora*

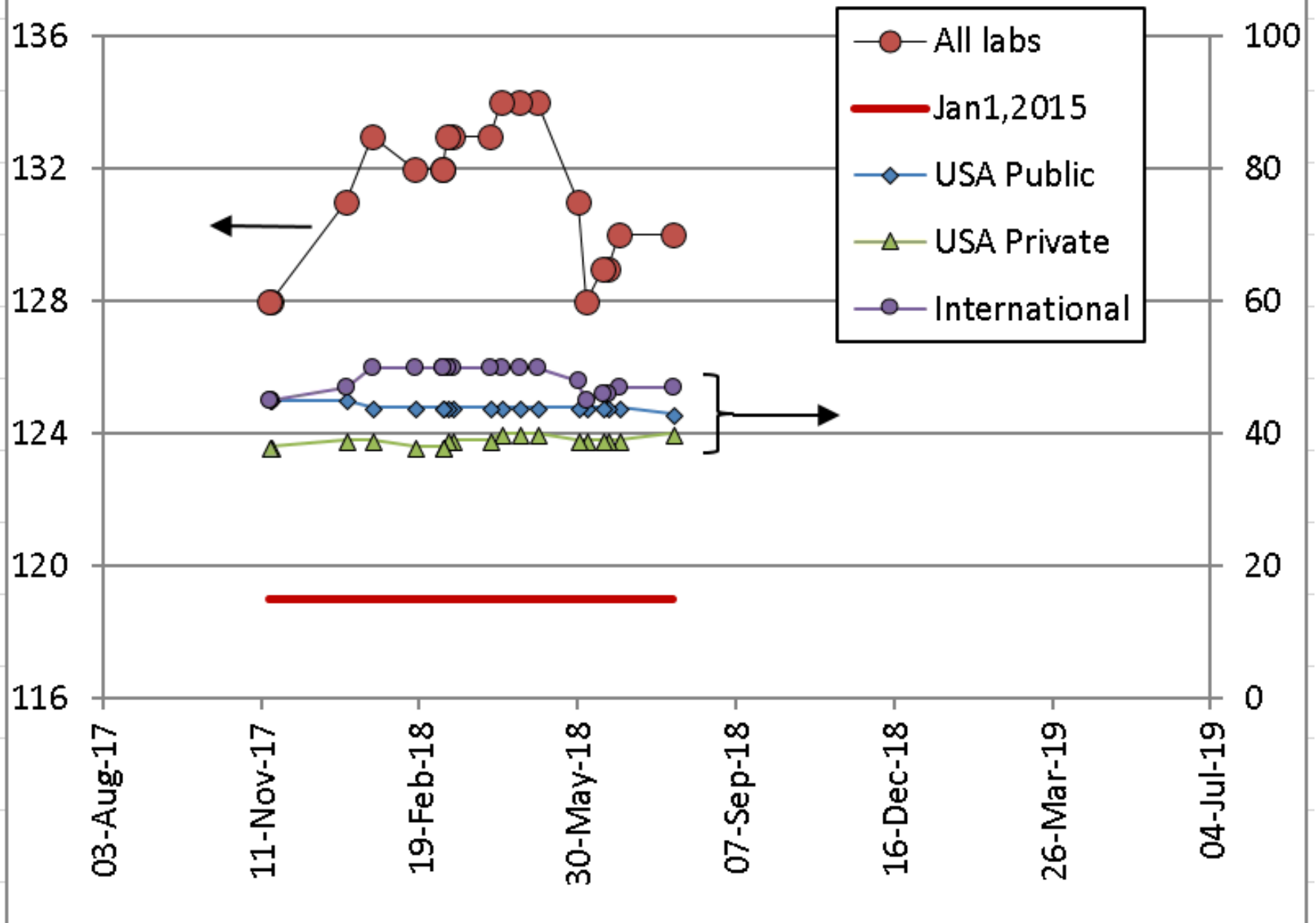
**Division of Regulatory Services  
University of Kentucky**

Magruder committee  
Fort Lauderdale, FL  
Aug 3, 2018

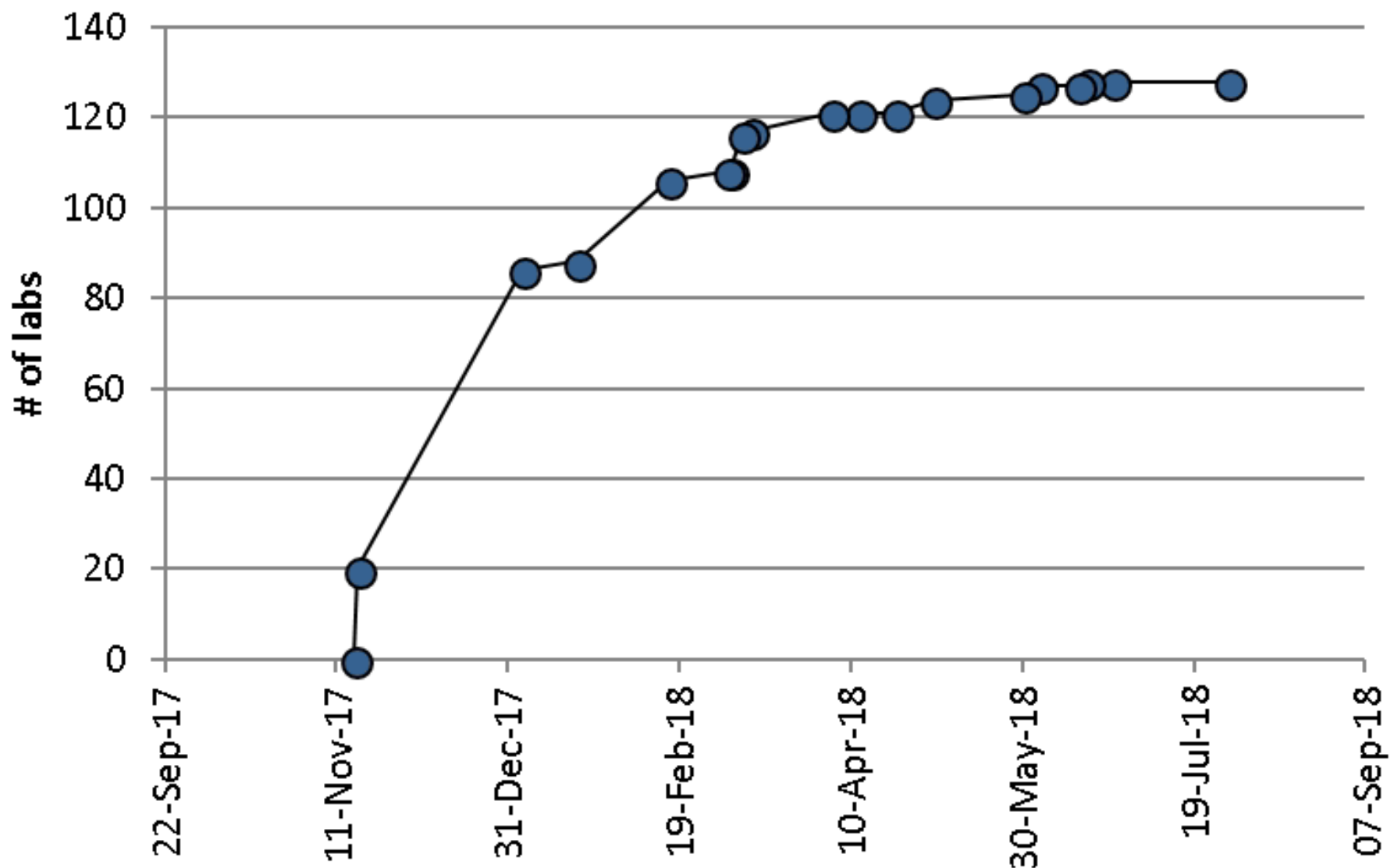


College of Agriculture,  
Food and Environment  
*Regulatory Services*

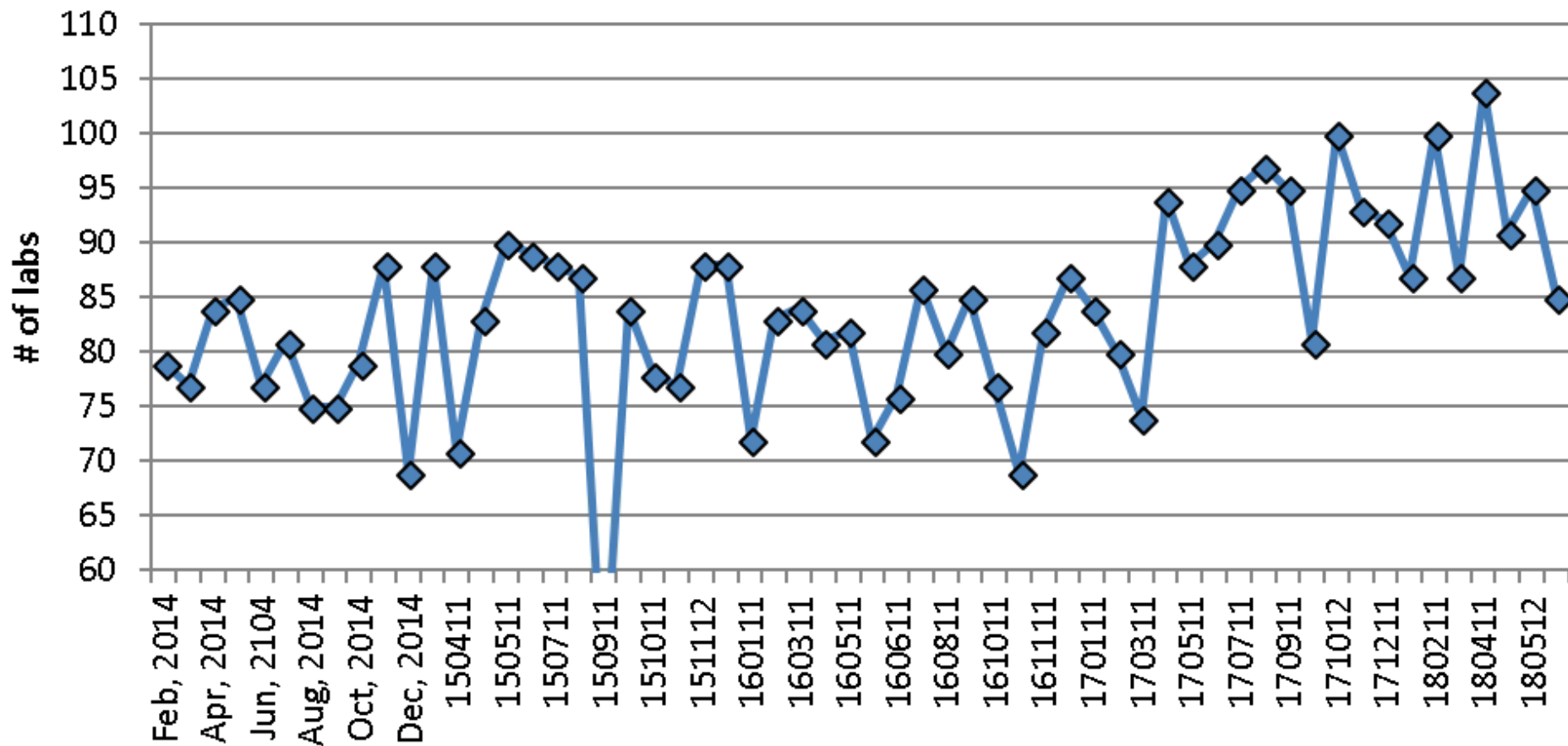
# # of Active Clients



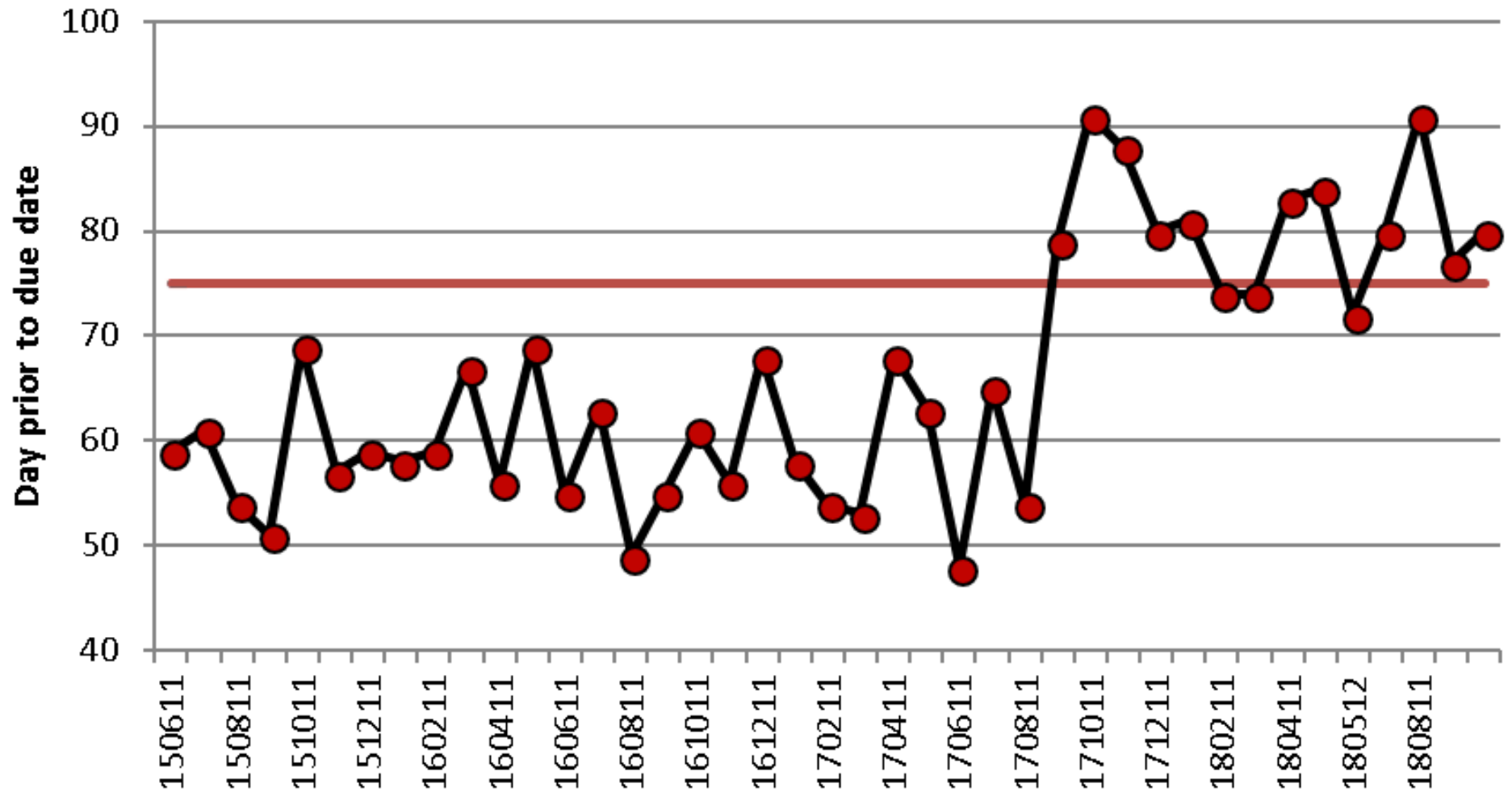
## Paid clients



## # labs reporting



## Days shipped prior to due date



# Enrollment Certificates

- Email to lab when payment received
- Update Enrollee list on web



Association of  
American Plant  
Food Control  
Officials

# Enrollment Certification

This is certification that the laboratory listed below is currently enrolled in the Magruder Fertilizer Check Sample Program. The laboratory enrolled in the program for the participation period of

**1/1/19 to 12/31/19**

**Enrollee of the Magruder Fertilizer Check Sample Program**

*[www.magruderchecksample.org](http://www.magruderchecksample.org)*

**Isusa Agraciada**

**Camino Vecinal Tramo 154 s/n**

**Nueva Palmira, Colonia 70700**

**Uruguay**

**Bill Hall, chairman**

**7/27/18**

**Date**

# Web Site Update

- New web site on line April, 2017
- Proposed changes
  - Certificate of Analyses for samples
  - Main menu selections
  - Enrollee list

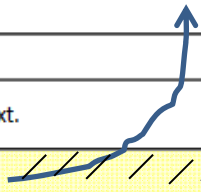


# Method Codes

- Updated Bartos and Webb methods to AOAC code
- Proposed changes
  - Abbreviate elements to chemical symbol

# Updating P method codes

041.10	Direct Available Phosphorus as P2O5	Gravimetric Quinolinium	%	960.03	Prep as 960.03B, Detect as 960.03E
041.11	Direct Available Phosphorus as P2O5	Gravimetric Quinolinium, Citrate-EDTA Ext.	%		Prep as 993.31C, Detect as 960.03E
041.20	Direct Available Phosphorus as P2O5	Spectrophotometric	%	960.03	Prep as 960.03B, Detect as 960.03D
041.21	Direct Available Phosphorus as P2O5	Spectrophotometric, Citrate-EDTA Ext.	%		Prep as 993.31C, Detect as 960.03D
041.30	Direct Available Phosphorus as P2O5	Alkalimetric Quinolinium MolybdoP	%	960.03	Prep as 960.03B, Detect as 960.03C
041.31	Direct Available Phosphorus as P2O5	Alkalimetric Quinolinium MolybdoP, Citrate-EDTA Ext.	%		Prep as 993.31C, Detect as 960.03C
041.40	Direct Available Phosphorus as P2O5	Automated	%	978.01	
041.50	Direct Available Phosphorus as P2O5	ICP	%		
041.51	Direct Available Phosphorus as P2O5	ICP, Citrate-EDTA Ext.	%		ICP: Bartos et al.: JAOACI Vol. 97, No. 3, 2014, p 699
<del>041.80</del>	<del>Direct Available Phosphorus as P2O5</del>	<del>Citrate-EDTA Ext.</del>	<del>%</del>	<del>993.31</del>	<del>///</del>
041.99	Direct Available Phosphorus as P2O5	Other	%		



# Lab Portal Proposed Update

- Add Detection Limits and remove Save button
  - Cost from FASS: \$1027.05
- FASS hosting cost: \$10 / month